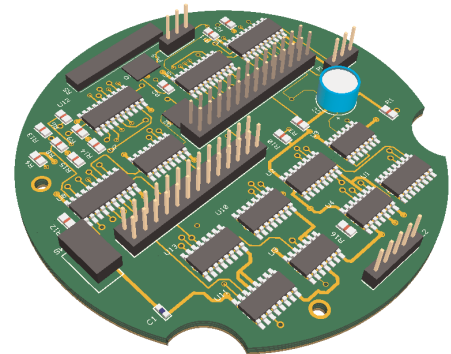


Pulsonix V4.5 Release



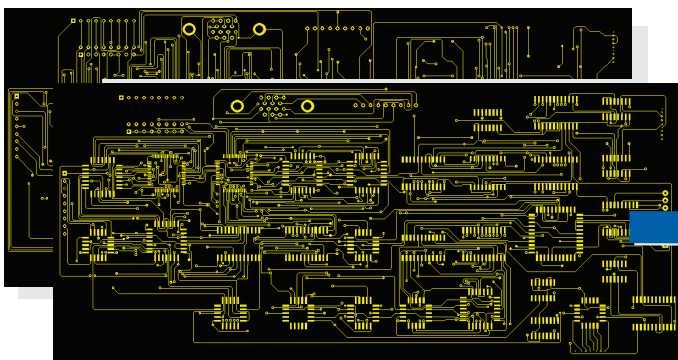
3D Viewer

The 3D viewer allows you to see a 3D representation of your PCB and visibly check height clearances. Visualise your PCB in a realistic 3D view to see just how it will look after manufacture. The image may be rotated through any axis and viewed from top, bottom, and with exaggerated perspective. With real component heights being used in the design, the 3D view will allow you to gauge clearances in the enclosure. This view can also be printed in full colour if required. This feature does not require any IGES information to be imported for use.

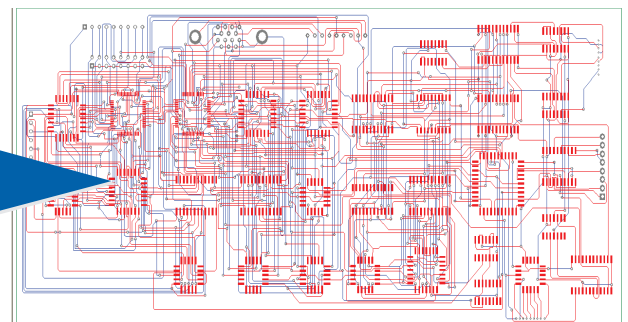


Intelligent Gerber Import

The Intelligent Gerber Import option allows you to take existing Gerber files (and Excellon/BOM files if available) and rebuild them back into Pulsonix design format with full electrical connectivity and integrity. Using the intelligence within this new option you can build and use Parts, fully rebuild track paths with vias and layer changes and regain full component placement. The result is a layout that looks and feels like it was originally created in Pulsonix from scratch. From this you can even rebuild the PCB back into an original Schematic using the existing reverse Engineer option.



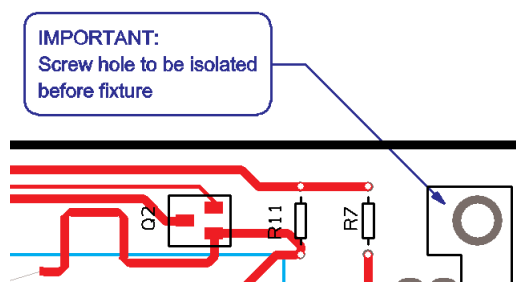
Original Gerber Files



Design rebuilt after import to create Pulsonix

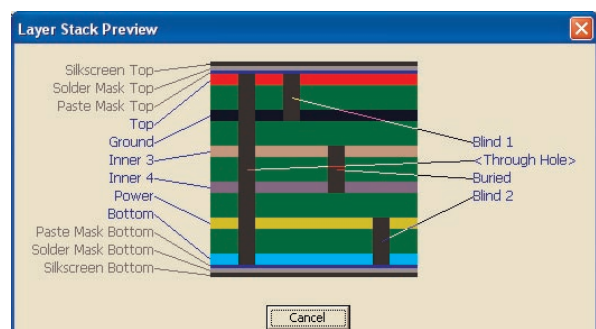
Text Callouts

Text callouts are used to add professional documentation to your design. Callouts are simply added and contain many customisable properties to help you create the look and style required. Once added they are dynamic and can be moved or edited.



Layer & Via Stack Preview

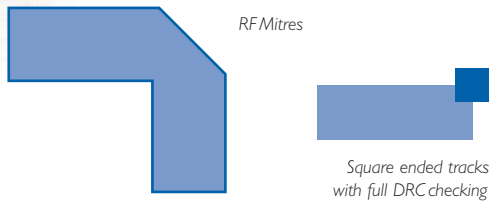
The new Layer Stack Preview gives you a cross-section visualisation of the PCB showing and naming the full layer stack and all via spans defined for the PCB design. This ensures you have visual confirmation of the manufacturability of the design before being actually made.



Pulsonix V4.5 Release (cont'd)

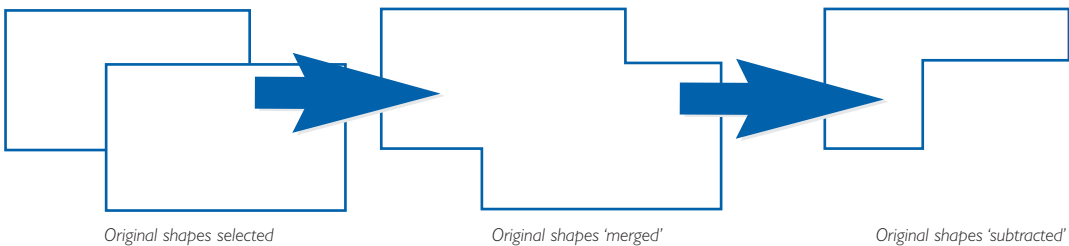
New RF Design Features: Square ended tracks and RF Mitres

Special requirements for RF design like square ended tracks and RF Mitres can be easily defined in the Net Class rules dialog for a specific net class. RF Mitres have different inside and outside corner shapes (inside 90 degrees and outside 45 degrees) and are automatically created when added to the design. Full DRC checking is carried out on the shapes created.



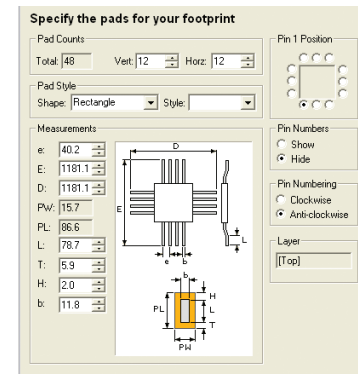
Merge Shapes

Two or more shapes in a design can be merged to create a single entity. The merging can be an additive or subtractive process using new functionality available. This feature enables you to create complex shapes using the existing drawing options.



Improved Footprint/Symbol Wizards

Enhancements to the Footprint Wizard add a number of new devices, such as Axial, SON and QFN footprints. Plus it adds a new graphical representation of the device similar to the way it appears on the manufacturer's datasheet. This enables you to create your new footprint quickly and accurately by transferring the device specifications directly to the appropriate dimension boxes in the wizard.



Feature Summary for Pulsonix V4.5

- Change Style applied to whole net
- Print Improvements (all sheets in design, whole design, all colours black)
- Windows Plot across multiple pages
- Support for Spice Safe Area Testing (SOA)
- Layer selection for shortcut keys
- Colours file selection in Browser
- Reverse edit direction in PCB connection
- Split Nets option in Schematics
- Equi-space track hugging mode
- Advanced filtering connections
- Report Maker O/P for Libraries
- Import DXF for user defined pads
- Multiple shape editing in user defined pads
- Plus lots more...

Pin/Gate Swap Routed Pins

The ability to swap pins and gates once the track(s) has been routed has been added. The swapping would be in accordance to the Part definition.

Save/Load User Profile Workspace

This new feature allows the portation of user Pulsonix profiles between machines. These are all design and environment settings used for Pulsonix. Profiles can be set on a per-user basis and are utilised on login.

PESCHGES VARIOMETER GmbH

Tel: 0241 - 56 30 23
Fax: 0241 - 56 39 13

D-52078 Aachen, Zieglerstr. 11
E-mail: vertrieb@peschges-eda.de
Web: www.peschges-eda.de